

Corrigendum to "Bee systematics and conservation"

Almeida, E. A. B., López-Urbe, M. M., Packer, L., Porto, D. S., and Camacho, G. P. (2025). Bee systematics and conservation. *Sociobiology*, 72(2): e11416. <https://doi.org/10.13102/sociobiology.v72i2.11416>

In the published article, Figure 2 was incorrect because the geographic areas of three taxa were shown with errors: the Allodapini (Apidae) occur in the Afrotropical, Australian, Oriental, and Palearctic regions; the Centridini (Apidae) occur in the Nearctic and Neotropical regions; and the Meganomiinae (Melittidae) occur in the Afrotropical and Palearctic regions. The correct figure is included below. We apologize for these errors and thank Dr. Nicolas Vereecken for bringing them to our attention.

Publication date 08 June 2025

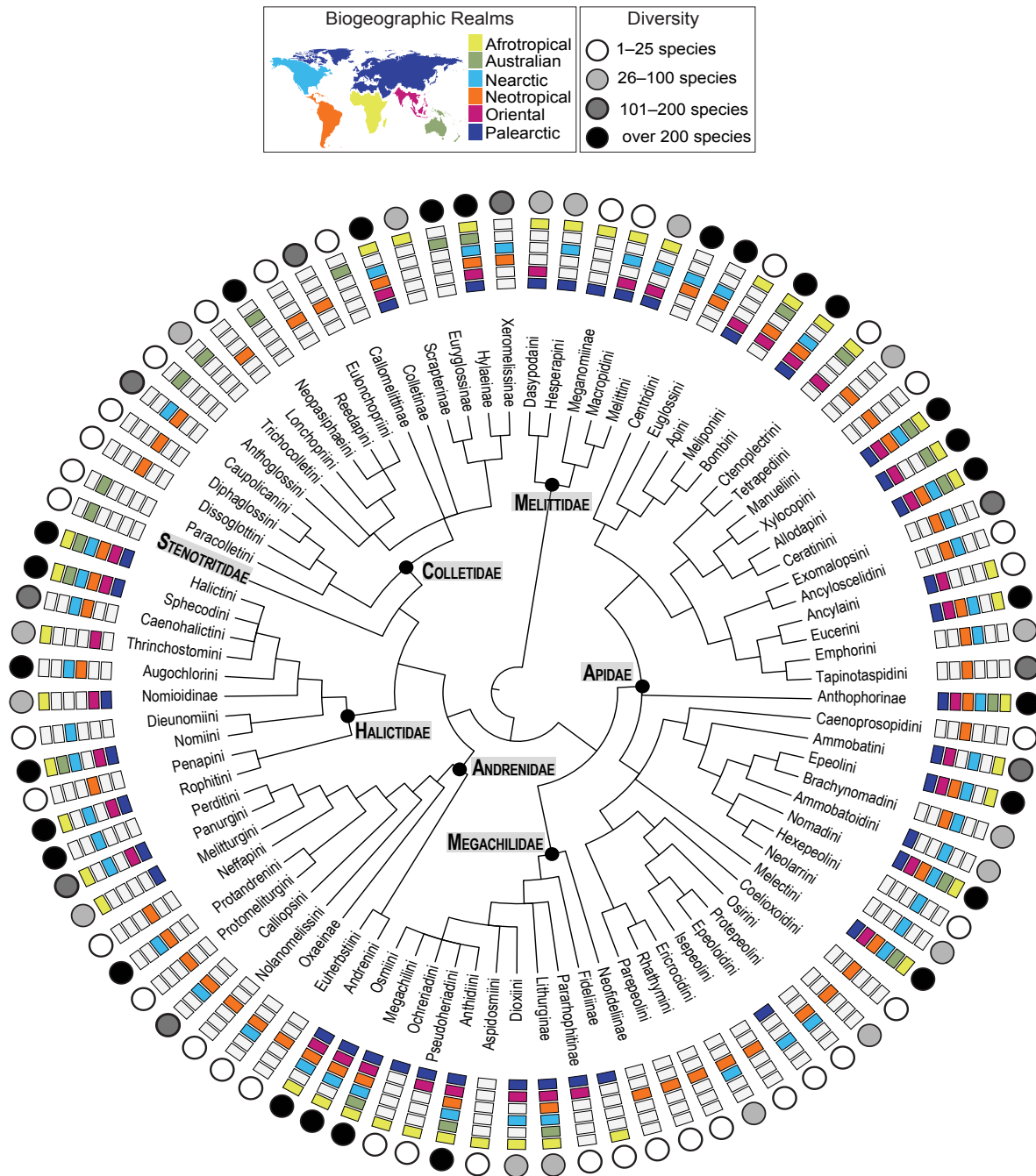


Fig 2. Geographic distribution of the major lineages of bees in six terrestrial biogeographic realms (modified from Holt et al., 2013), their species richness and a summary of phylogenetic relationships among these taxa. Current species-level diversity and occurrence of taxa were compiled from the Discover Life world checklist (Ascher & Pickering, 2020) and complemented by Almeida, Bossert et al. (2023: Data S1C); non-native distributional ranges are disregarded.